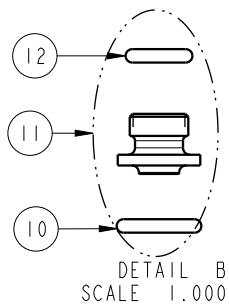
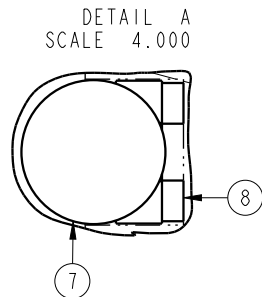
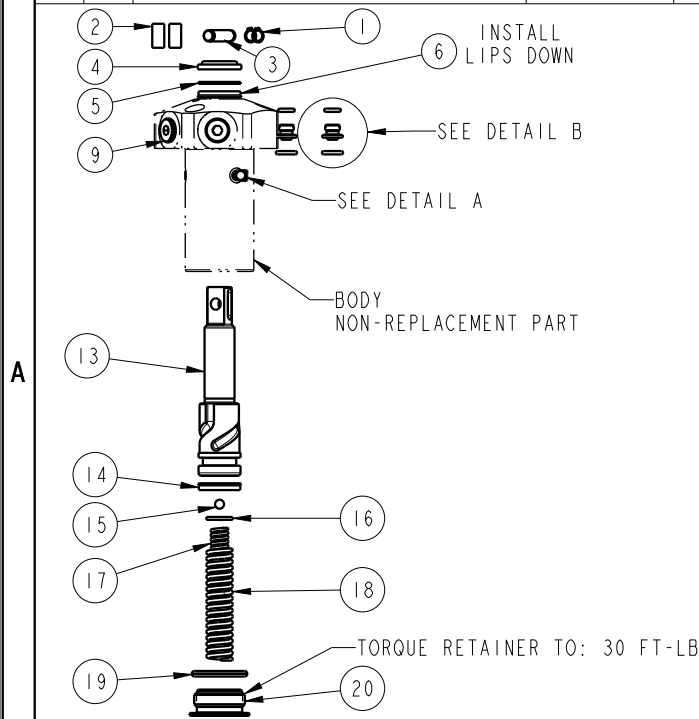


Prefix-000049-Suffix

NO.	QTY.	DESCRIPTION	MODEL NUMBER			STANDARD SEAL KIT	FLUOROCARBON SEAL KIT	SPRING KIT
			14-6109-20-X	14-6113-20-X	14-6118-20-X			
1	2	RING, RETAINING, EXT	23-0500-32	23-0500-36	23-0500-38	NO	NO	NO
2	2	STOCK, CORD, NBR	23-3400-01	23-3400-03	23-3400-04	NO	NO	NO
3	1	PIN, ROCKER, SC	81-4002-71	81-4002-73	81-4002-74	NO	NO	NO
4	1	WIPER, ROD (FLUOROCARBON)	39-0530-01	39-0530-00	39-0530-05	YES	YES	NO
5	1	BACK-UP RING, ROD	39-F540-01	39-F540-02	39-0540-08	YES	YES	NO
6	1	SEAL, ROD (STANDARD)	39-0100-20	39-0110-46	39-0110-60	YES	NO	NO
		SEAL, ROD (FLUOROCARBON)	39-V100-20	39-V110-46	39-0520-15	NO	YES	NO
7	3	BALL, STEEL ALLOY	23-6000-11	23-6000-02	23-6000-13	YES	YES	NO
8	3	BALL SEAT ASSEMBLY	90-1999-57	90-1999-58	90-1999-59	YES	YES	NO
9	1	BREATHER	92-0900-01	92-0900-01	92-0900-01	NO	NO	NO
10	2	O-RING, MANIFOLD (STANDARD)	39-0500-42	39-0500-42	39-0500-42	YES	NO	NO
		O-RING, MANIFOLD (FLUOROCARBON)	39-0510-25	39-0510-25	39-0510-25	NO	YES	NO
11	2	MANIFOLD MOUNT ADAPTOR (STANDARD)	30-8711-20	30-8711-20	30-8711-20	YES	NO	NO
		MANIFOLD MOUNT ADAPTOR (FLUOROCARBON)	30-8711-20F	30-8711-20F	30-8711-20F	NO	YES	NO
12	2	O-RING, ADAPTOR (STANDARD)	39-0500-36	39-0500-36	39-0500-36	YES	NO	NO
		O-RING, ADAPTOR (FLUOROCARBON)	39-0510-24	39-0510-24	39-0510-24	NO	YES	NO
13	1	PLUNGER, RIGHT HAND	81-4109-00	81-4113-00	81-4118-00	NO	NO	NO
		PLUNGER, LEFT HAND (SHOWN)	81-4109-01	81-4113-01	81-4118-01	NO	NO	NO
14	1	SEAL, PLUNGER (STANDARD)	39-0100-15	39-0110-27	39-0110-55	YES	NO	NO
		SEAL, PLUNGER (FLUOROCARBON)	39-0520-11	39-0520-12	39-0520-13	NO	YES	NO
15	1	PIVOT BALL	23-6000-11	23-6000-02	23-6000-13	NO	NO	YES
16	1	PIVOT DISK	81-5909-01	81-5913-01	81-5918-00	NO	NO	YES
17	1	INNER SPRING	23-3110-13	23-3130-09	23-3140-10	NO	NO	YES
18	1	OUTER SPRING	23-3130-08	23-3130-10	23-3140-09	NO	NO	YES
19	1	O-RING, RETAINER (FLUOROCARBON)	39-0510-31	N/A	N/A	YES	YES	NO
		GASKET	N/A	39-T550-03	39-T550-04	YES	YES	YES
20	1	RETAINER	81-4000-29	81-4000-30	81-5318-00	NO	NO	NO
N/A	N/A	SEAL KIT (STANDARD)	60-1400-07	60-1400-09	60-1400-17	INCLUDED IN KIT		
N/A	N/A	SEAL KIT (FLUOROCARBON)	6V-1400-07	6V-1400-09	6V-1400-17			
N/A	N/A	SPRING KIT	61-1400-04	61-1400-05	61-1400-06			



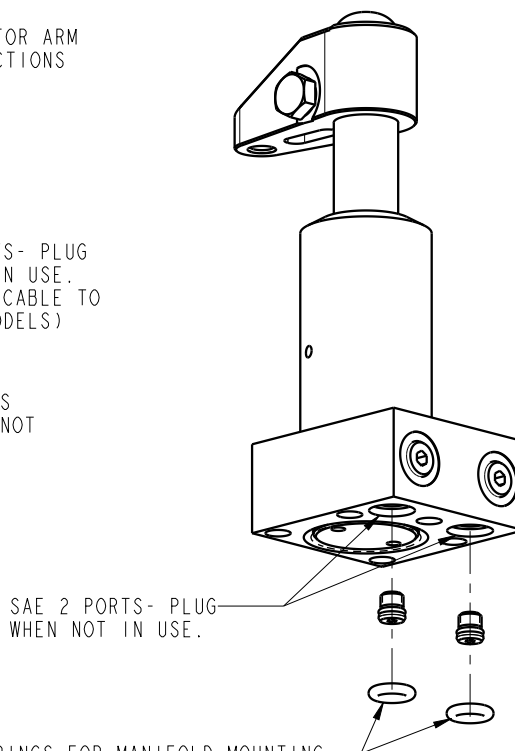
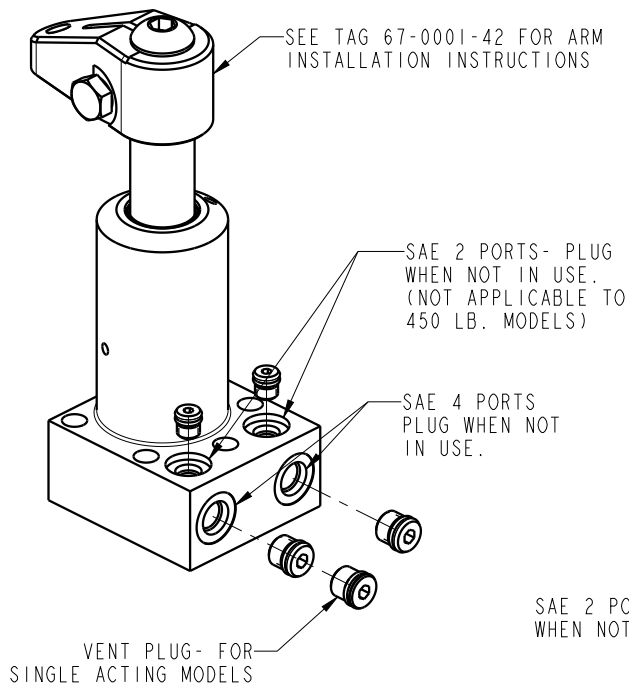
- NOTES:
1. APPLY LUBRICANT TO ALL SEALS PRIOR TO INSTALLATION.
 2. DO NOT USE SILICONE TYPE LUBRICANTS.
 3. SEAL KITS CONTAIN MANIFOLD MOUNT O-RINGS FOR BOTH BOTTOM FLANGE, (LARGE CROSS-SECTION), AND TOP FLANGE, (SMALL CROSS-SECTION), MODELS.

ALSO AVAILABLE: IS-1500 INSTRUCTION SHEET

PARTS LIST	 VEKTEK, INC. 1334 E. SIXTH AVE. P.O. BOX 625 EMPORIA, KS. 66801 U.S.A.
ASSEMBLIES AFFECTED 14-6109-20-L, 14-6109-20-R 14-6113-20-L, 14-6113-20-R 14-6118-20-L, 14-6118-20-R	PARTS LIST, SC, TF, CLEVIS, SA
SIZE A	PL1462
	REV A

A	5867	RELEASE	NPETERS	12/11/25
REV	IN ACCORDANCE WITH ECN	EFFECTIVE DATE	REVISED BY	DATE
DRW BY:	NPETERS	DRAWING STATUS: Released		
DATE:	12/3/25	PRODUCTION APPROVED FOR RELEASED STATUS ONLY		

SHEET 1 OF 1



ALL SWING CLAMPS ARE SHIPPED WITH PLUGS OR VENTS INSTALLED IN EACH PORT.

REMOVE PLUGS AS NECESSARY TO CONNECT THE SWING CLAMP TO THE HYDRAULIC CIRCUIT. KEEP THESE PLUGS FOR POSSIBLE USE AT A LATER TIME.

ALL MATING SURFACES MUST BE FLAT WITHIN .003 INCHES WITH A SURFACE ROUGHNESS NOT EXCEED $63\mu\text{IN } R_A$

WHEN MANIFOLD MOUNTING, THE HYDRAULIC FLUID FEEDER HOLES SHOULD BE .09-.15 INCHES IN DIAMETER AND CONCENTRIC TO THE O-RING PORT WITHIN .030 INCHES.

INSTALLATION INSTRUCTIONS



VEKTEK, INC.
1334 E. SIXTH AVE. P.O. BOX 625
EMPORIA, KS. 66801 U.S.A.

ASSEMBLIES AFFECTED
Bottom Flange
Swing Clamps

SIZE
A

IS-1500

REV
F

F	4258	RELEASE	JDW	08/18/20
REV	IN ACCORDANCE WITH ECN	EFFECTIVE DATE	REVISED BY	DATE
DRW BY:	VANDALSEM	DRAWING STATUS: Released		
DATE:	07/11/90	PRODUCTION APPROVED FOR RELEASED STATUS ONLY		

FORM FEG041-IS-ASIZE, REV. B

SHEET 1 OF 1